

PRODUCT INFORMATION

SERVA Western Blot Protein Standard

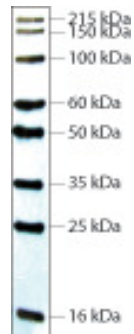
Cat. No. 39256

PRODUCT DESCRIPTION

The SERVA Western Blot Protein Standard contains highly purified recombinant proteins that are designed to bind immunoglobulins with high affinity in a denatured form, thus marker proteins bind to primary or secondary antibodies in western blotting. The protein standard can also be used for optimizing western transfer conditions, verification of antibody conjugated peroxidase intactness, and controlling the detection system. The Western Blot Protein Standard can be used in chemiluminescence or chromogenic detection methods. It is compatible with most immunodetection methods, including horseradish peroxidase or alkaline phosphatase systems.

Usage Information:

- Ready-to-use format, no need to heat or reduce prior to loading
- Recommended loading volume 1- 5 µl/lane (suitable for 50 - 200 lanes); although 5 µl is the recommended loading volume, it is possible to load 1-10 µl depending on the binding affinity of the antibody species and the sensitivity of the detection system in use.
- number of bands: 8
- MW range: 16 - 215 kDa



User Directions:

- Load 5 µl of the Western Blot Protein Standard on an appropriate SDS-PAGE gel
- Load samples
- Run the samples using the desired buffer system
- Electro-blotting of the proteins to a membrane
- Antibody incubation using method of choice
- Detection using chemiluminescence or colorimetric system
- **Storage: Store the Western Blot Protein Standard at -15 to -25 °C.**

Troubleshooting:

- Weak or uneven signals: Check detection system and western transfer efficiency
- Highly dense or dispersed signals: Decrease loading volume 1:10 - 1:1000

Vers 09/09